

PEOPLE AND TECHNOLOGY

Geolocation Intelligence and Smart Sensing

Travel Industry

Airport Asset Tracking – Use Case



The customer – Incheon Airport

Some context information

Incheon International Airport is the largest [airport in South Korea](#). It is the primary airport serving the [Seoul Capital Area](#) and one of the largest and busiest airports in the world.

As of 2021, the airport has been rated by [Skytrax](#) as the fourth best airport in the world. Skytrax also has rated the airport as the world's [best international transit airport](#) and one of the world's [cleanest airports](#). The airport is one of Skytrax's 5-star airports and also has been awarded for the best airport security in 2021. [\[3\]\[4\]\[5\]\[6\]](#)

Incheon International Airport's terminal has 111 boarding gates altogether, with 44 in Terminal 1, 30 in Concourse A (connected to terminal 1), and 37 in Terminal 2.

Incheon Airport – Real Time Location Asset Tracking

Pain

- Efficient operations heavily depends on high-value equipment availability
- Very large facilities (Terminals, Hangars, Driveways...) where moveable equipment is often misplaced.
- Lack of visibility and up-to-date information on asset status and availability.

Solution

- Real Time location of key assets with tags
- Seamless Outdoor and Indoor Tracking
- Operational care to limit active tag battery consumption

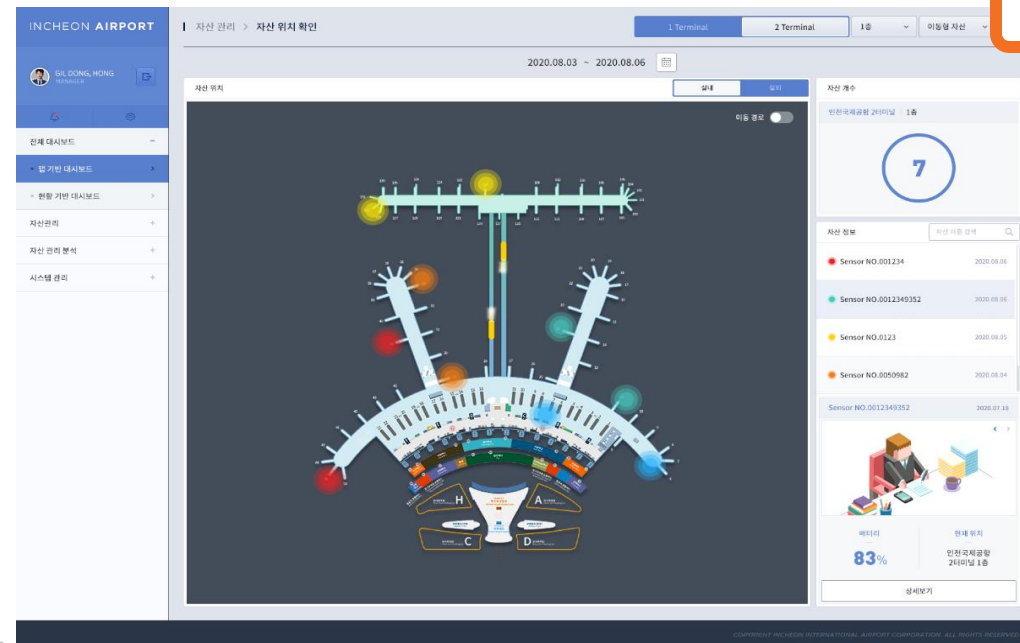
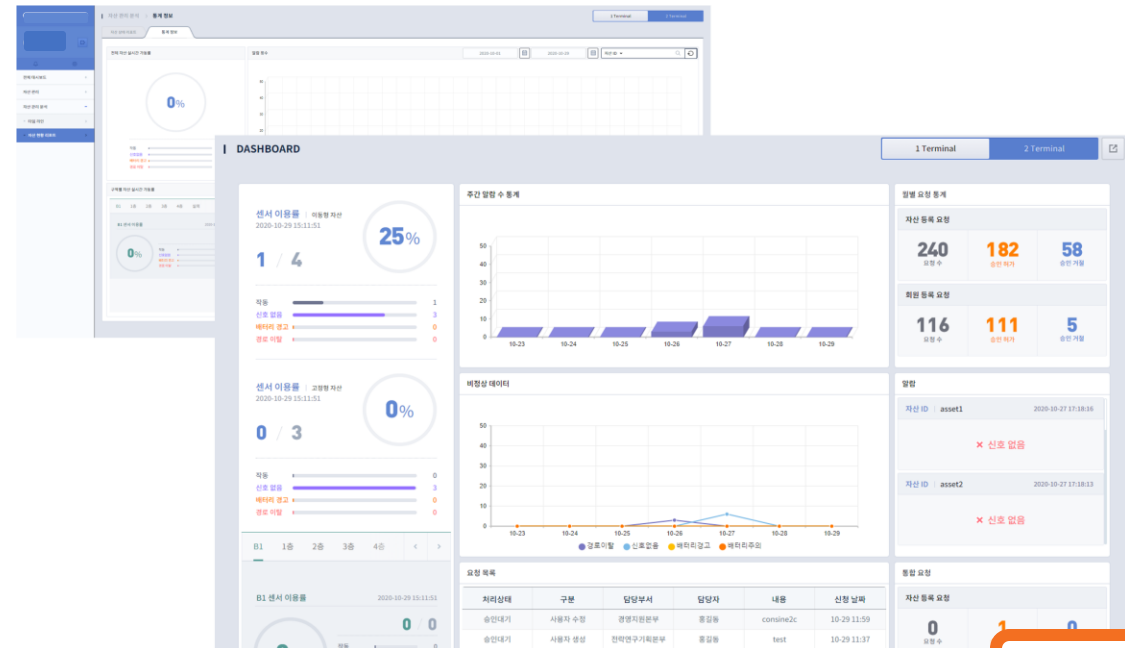
Benefits/Results

- ✓ PnT RTLS Asset Tracking contributes to
- ✓ Reduce costs (any estimates?)
- ✓ Improve efficiency by preventing time lost
- ✓ Prevent Loss or Theft (how effective?)



Key functionalities provided

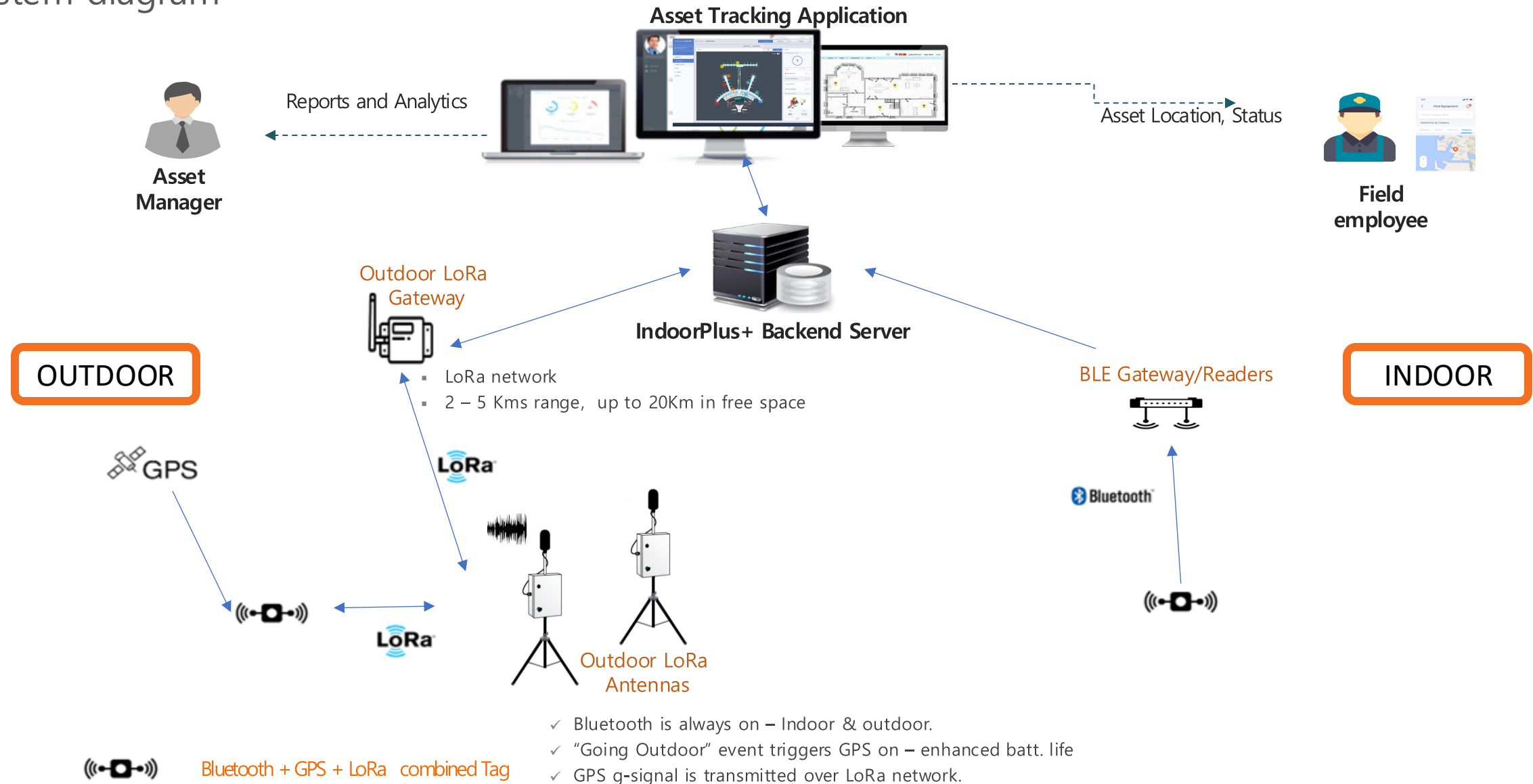
Asset Tracking Application Visuals



INDOOR

IndoorPlus+ Indoor/Outdoor Solution Overview

System diagram





Headquarter, (APAC)
People and Technology
2F, Youngchang Building,
27 Samsung-ro 95-gil, Samsung-dong,
Gangnam-gu,
06159 Seoul – South Korea

Actionable Geolocation Intelligence and Smart Sensing